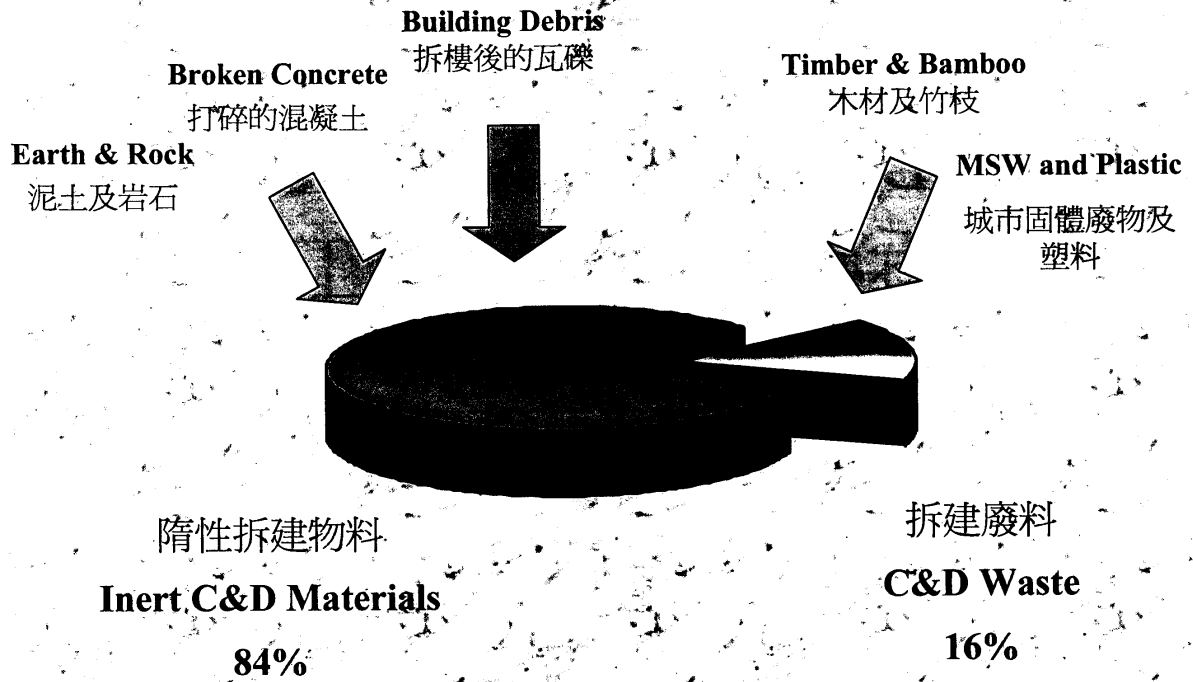

**Managing Construction and
Demolition Materials**
拆建物料的管理工作

Environment and Food Bureau
環境食物局

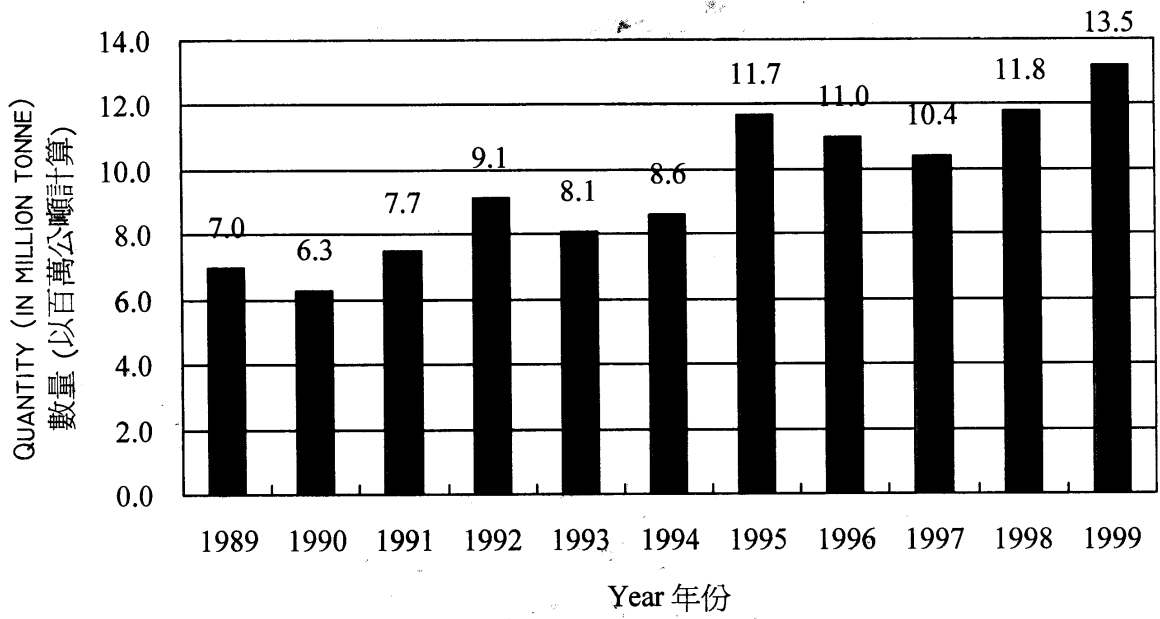
Composition of C&D Materials

拆建物料的成分



Historical Data on C&D Materials Produced and Reused

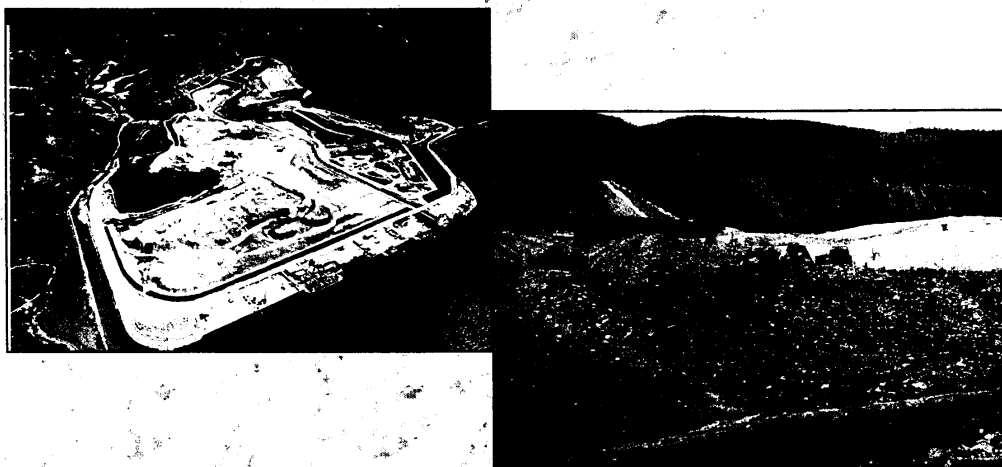
歷年來拆建物料的產量和再用數據



■ Reused in Reclamation Projects 再用在填海工程 ■ Disposed at Landfills 卸置在堆填區

Extend Landfill Life

延長堆填區壽命

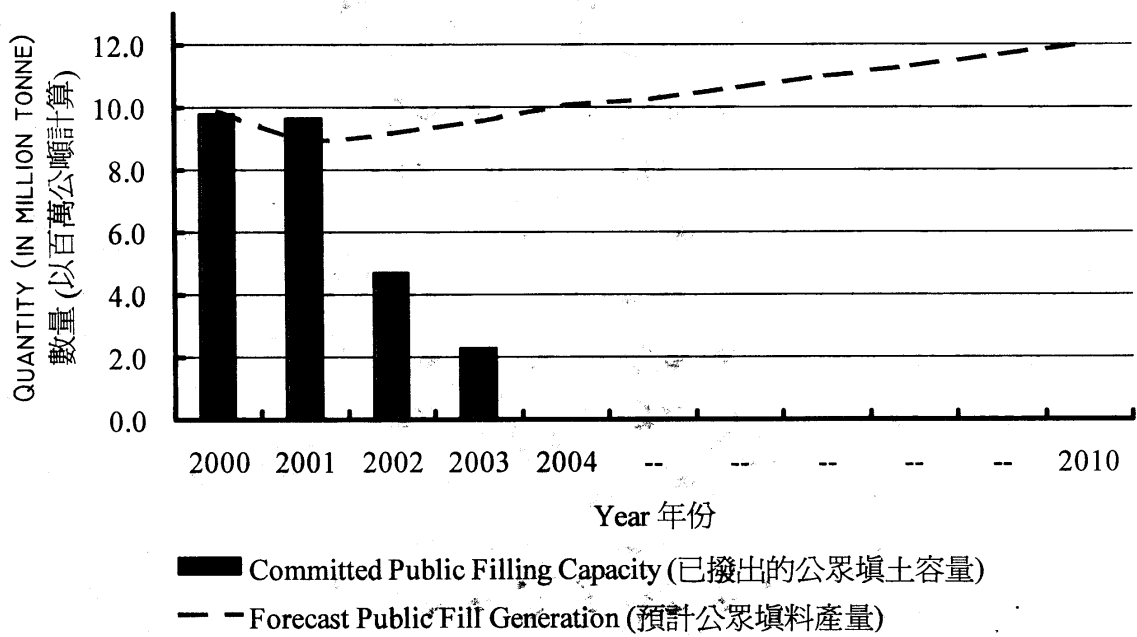


Existing landfills is expected to be filled up in 10 to 15 years

現有堆填區的容量在10至15年內便會達到飽和

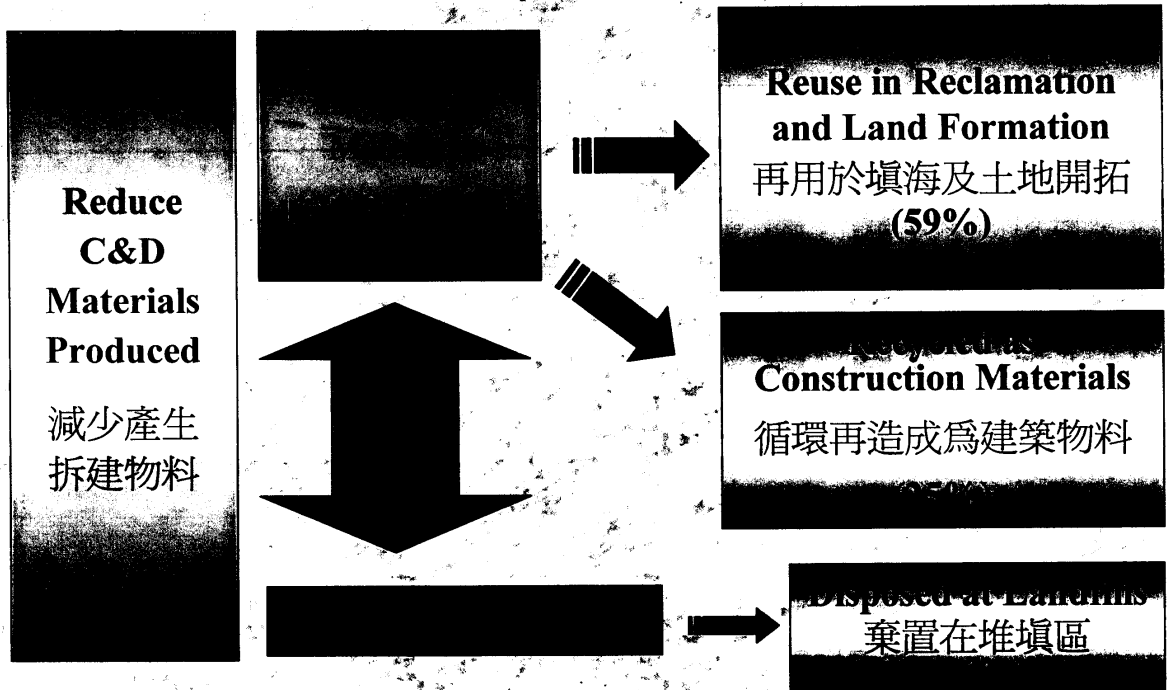
Public Fill Generation and Capacity Forecast

公眾填料產量及容量預計



C&D Materials Management Strategy: Reduce, Reuse, Recycle

拆建物料管理策略: 減少, 再用, 循環再造



Reduce Generation of C&D Materials

減少產生拆建物料



✓ Improve site management

改善工地管理

✓ New Construction Techniques

新的建築技術



Sorting C&D Wastes from Inert Materials

從拆建廢料中分出惰性物料



✓ Encourage on-site sorting
鼓勵在工地內進行分類

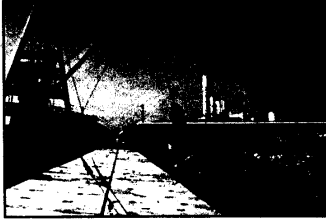
✓ Provide off-site sorting
in more remote areas
在較偏遠地方設置工
地外分類設施



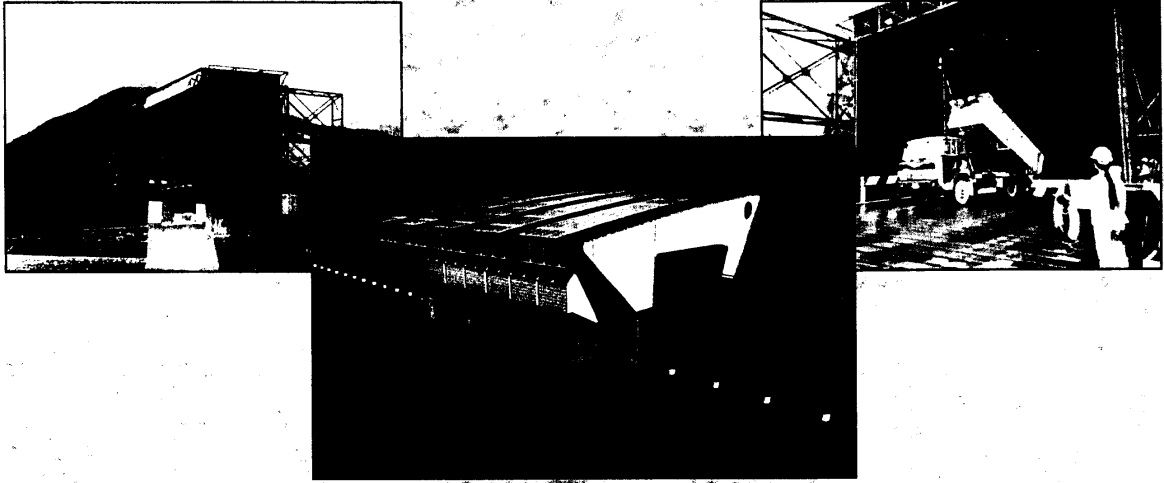
Reuse of Inert C&D Materials 再用隋性物料

- ✓ Maximise reuse of inert C&D materials as public fill in reclamation Works

儘量再用隋性物料作為填海工程的填料



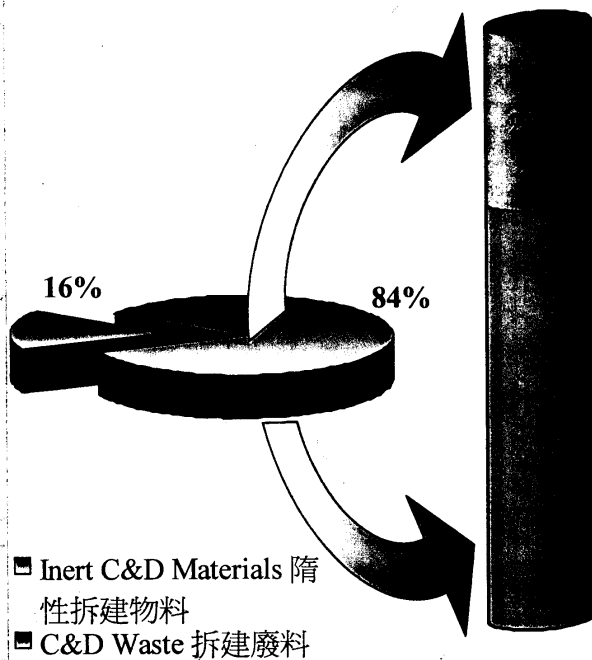
Public Filling Barging Points 公眾填土躉船轉運站



- ✓ **Minimise travel distance of dump trucks by providing a network of conveniently located barging points**

在交通方便的地點設立躉船轉運站網絡，以盡量縮短貨車途程

Reuse and Recycling 再用和循環再造



Recycle into Construction Materials

循環再造成建築物料

- ✓ Concrete / Asphalt production
生產混凝土/瀝青
- ✓ Road sub-base, Drainage Layer, etc
路基層、疏水層、等等

Reuse as Fill 再用填料

- ✓ Reclamation and Site Formation
填海及地盤平整

Actions Required

工作事項

- ? **Encourage the industry to explore and adopt alternative construction methods, materials and technologies to reduce C&D materials at source**

鼓勵業界探討和採用另類建造方法、物料和技術，從源頭着手減少產生拆建物料

- ? **Promote the concept of sustainable construction**

提倡可持續建造工程的概念

Actions Required

工作事項

- ? **Encourage the use of recycled construction materials**
鼓勵使用循環再造建造物料

- ? **Implement Landfill Charging**
推行堆填區收費

- ? **Examine Long-term Management Arrangements**
研究長遠處置方案

Actions Required

工作事項

- ? **Encourage sorting of inert C&D materials from C&D wastes**

鼓勵把惰性拆建物料和拆建廢物篩選歸類

- ? **Provide Facilities including 'Fill Bank', Sorting Facilities, and Recycling Facilities , a network of conveniently located barging points, etc.**

設立“填料庫”，設置篩選歸類設施，循環再造拆建物料的設施，交通方便的躉船轉運站網絡，等等