

## **Princess Margaret Hospital**

- ✓ **One of the Major Acute Tertiary Hospital for Kowloon West Cluster (KWC), serving 1.8 m population**
- ✓ **Center for -**
  - **Nephrology & Urology**
  - **Infectious Diseases**
  - **Toxicology**
- ✓ **1st supporting Trauma Center for CLK International Airport**

## **Critical Dates**

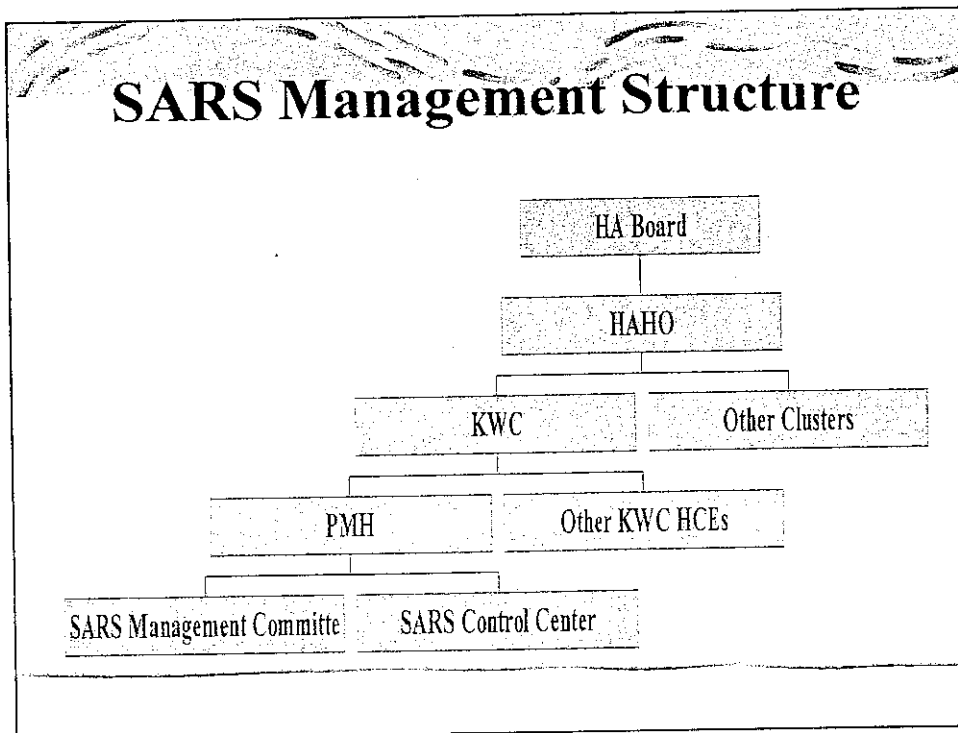
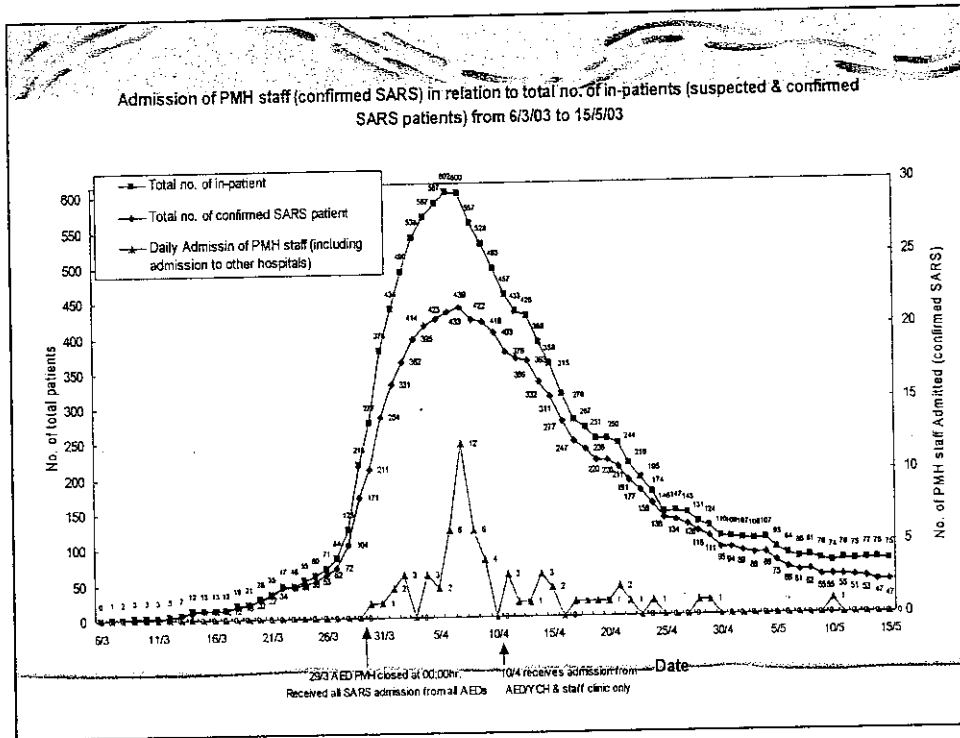
- ✓ **11/2 – PMH admitted family of H5N1 from China**
- ✓ **22/2 - KWH admitted Prof from Zhongshan**
- ✓ **6/3 – PMH admitted SARS patient from Hanoi**
- ✓ **10/3 - PWH outbreak**
- ✓ **24/3 - Amoy outbreak started**

## **PMH as Designated SARS Hospital**

- ✓ 26/3 - PMH to be designated as SARS hospital
- ✓ 27/3 - Announcement by CE HKSAR on a series of measures to fight SARS
- ✓ 27/3 - HA Chairman joined CCE Forum to announce the plan to all KWC staff
- ✓ PMH - Initial ward plan - 912 beds:
  - 4 admission wards - 120 beds
  - 20 SARS wards - 600 beds
  - 5 Paed wards - 118 beds
  - 4 adult ICU - 64 beds, 1 NICU/PICU - 10 beds
- ✓ WTSH - 400 convalescent beds

## **Peak Phase - 24 Mar - 6 Apr**

- ✓ 29/3
  - 00.00hr close A&E PMH
  - 09.00hr start admitting all new SARS
  - Set up SARS Control Center
- ✓ 31/3
  - all regular services moved out from PMH to CMC, YCH, KWH & OLMH
  - DH Surveillance team stationed at PMH
- ✓ 5/4
  - total 596 SARS admitted to PMH
  - 423 confirmed SARS
  - ICU patients increased from 13 to 43
  - 5 Paed ICU patients



## PMH SARS data – 22/2 to 31/5

<b>Total admissions</b>	<b>1052</b>	
<b>Confirmed SARS</b>	<b>585</b>	55.6% (PMH), 33.3% (HK)
<b>Confirmed Amoy</b>	<b>188</b>	32% (PMH), 57% (HK)
<b>SARS Death</b>	<b>60</b>	10.2 % (SARS)
<b>ICU admission</b>	<b>127</b>	<b>21.7 %</b> (confirmed SARS)
<b>HCW infected</b>	<b>63</b>	<b>16% of HA HCW</b>

## Staff Deployment to PMH

	ICU	Medicine	Total
<b>Doctors</b> From other hospitals	20	29	49
<b>Doctors</b> From PMH	14	7 (Interns)	21
<b>Total Doctors</b>	<b>34</b>	<b>36</b>	<b>70</b>
<b>Nurses</b> From other hospitals	42		42
<b>Nurses</b> From PMH	231	81	312
<b>Total Nurses</b>	<b>273</b>	<b>81</b>	<b>354</b>

## PMH Staff affected

	ICU	Others	Total
Doctors	5 + 1	2	8
Nurses	11	24	35
Clerical	2	2	4
Supporting	5	11	16
Total	24	39	63

## Plateau Phase : 7 Apr - 20 Apr

- 7/4 - WTSH started admitting SARS convalescent patients
  - Peak of HCW affected - total 12 on this day
- 8/4 - PMH transferred 10 potentially ill patients out to other clusters
  - Mandatory reporting and attendance at 24 hr staff clinic for all sick staff at PMH
- 11/4 - PMH stopped all SARS admission

## **Resolution Phase : 21 Apr - 4 May**

- ✓ 22/4 - outbreak at CMC Rehab ward - 8 staff and 14 patients affected
- ✓ 22/4 - visit by SETW to advise on environmental improvement
- ✓ 27/4 - outbreak at LKB - 2 staff, 2 patients
- ✓ 4/5 - 10 crewmen from a Malaysian ship requested medical assistance for suspected SARS - assessed at A&E and discharged

## **Normalising Phase : 5 May - 1 Jun**

- ✓ 7/5 - PMH to admit all pregnant SARS
- ✓ Deep cleansing of Block EF at PMH
- ✓ 12/5 - PMH resumed all non-SARS medical admission
- ✓ 9/6 - PMH to admit all new SARS except from NTEC
- ✓ 28/6 - PMH resumed normal full service

## **Infection Control Measures**

- ✓ **Environmental Improvement** – exhaust fans, space out beds, air-cleaners, step up cleansing routines – wards, toilets,
- ✓ **Zoning** – dirty, clean
- ✓ **Infection control guidelines & training**
- ✓ **PPE supplies** – standard apparel for all areas, special for high risk procedures
- ✓ **Infection Control Audit Teams**

## **Hospital Infection Control Audit**

- ✓ **Compliance internal audit** – Patrol nurse
- ✓ **Environmental internal audit**
- ✓ **Surprise check**
- ✓ **External audit**