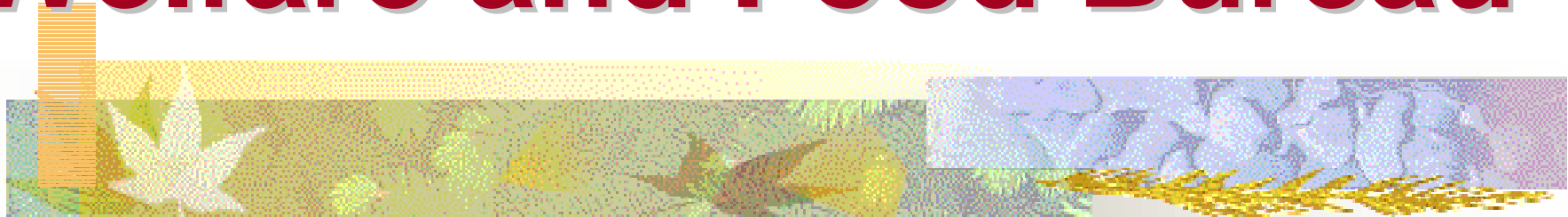


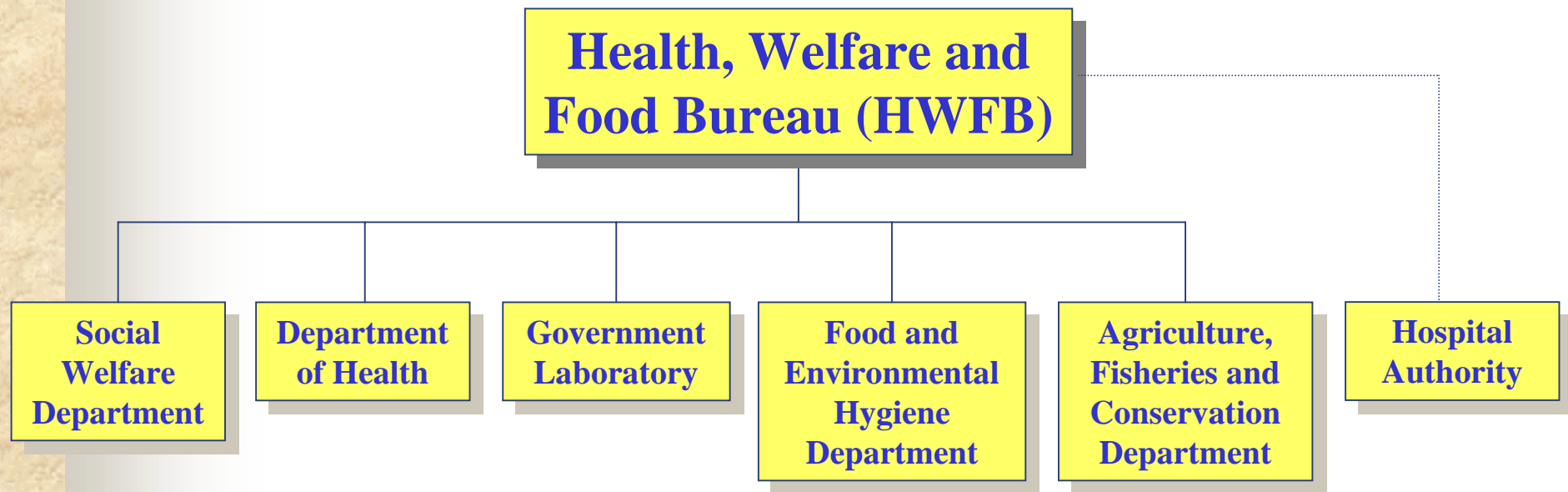
Introduction to Health, Welfare and Food Bureau



[REDACTED]
Permanent Secretary for Health, Welfare & Food
26 June 2003



Organisational Structure



Health, Welfare and Food Bureau

Hong Kong Special Administrative Region

Policy Areas

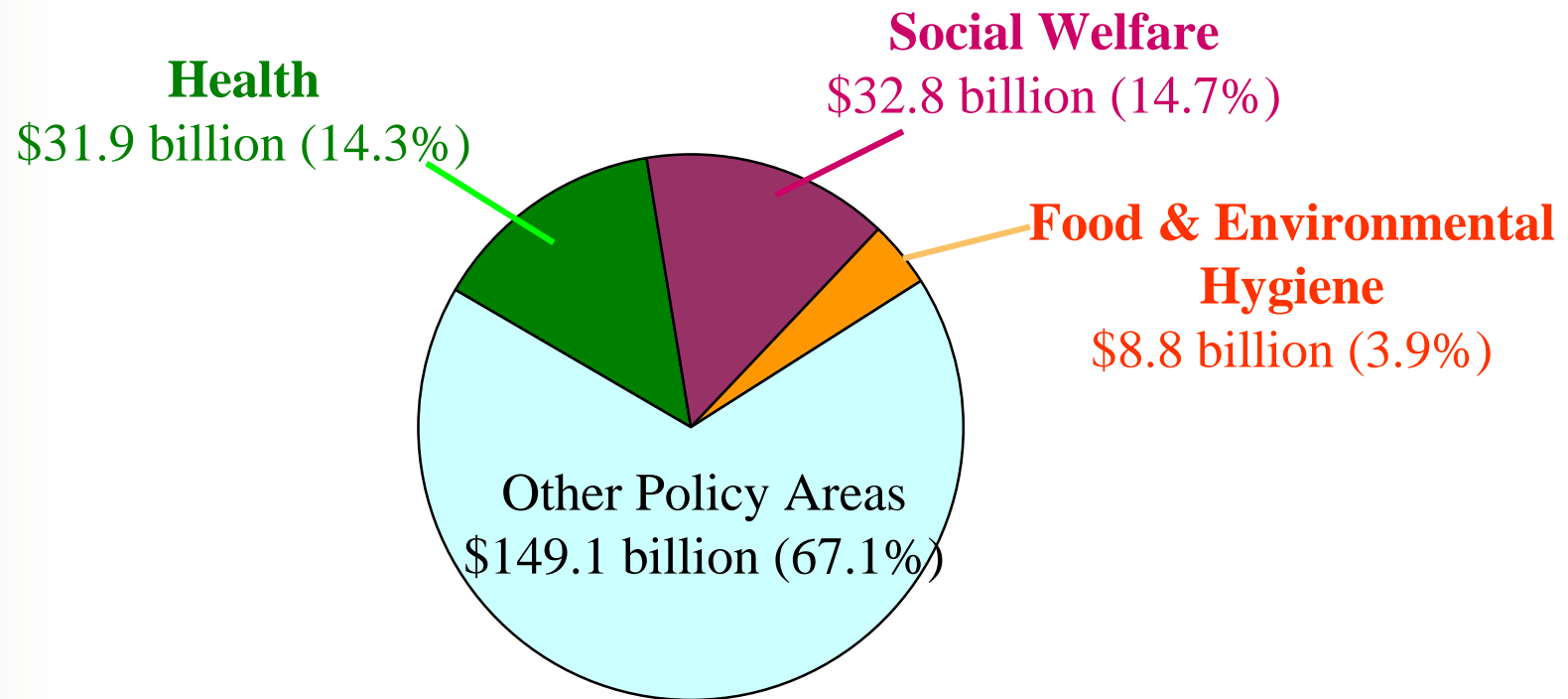
- Health
- Social Welfare
- Food and Environmental Hygiene
- Women's Interests



Health, Welfare and Food Bureau

Hong Kong Special Administrative Region

Percentage Share of Health, Welfare and Food in Total Recurrent Public Expenditure



2003-04 Total Recurrent Public Expenditure:
\$223 billion (US\$28.6 billion)



Health, Welfare and Food Bureau

Hong Kong Special Administrative Region

Health



Health, Welfare and Food Bureau

Hong Kong Special Administrative Region



Health Policy

Our Mission:

Develop and maintain in Hong Kong a health care system which

- protects and promotes the health of the population
- provides lifelong holistic care to each citizen
- is affordable and financially sustainable in the long-term



Health, Welfare and Food Bureau

Hong Kong Special Administrative Region

Health Care System – an Overview

- Dual public and private system
- About 45% doctors are working in the public sector, while 55% are in private practice
- 93% of hospital services and 15% of outpatient services are provided by the public sector



Health, Welfare and Food Bureau

Hong Kong Special Administrative Region



The Key Players

- Health, Welfare & Food Bureau (HWFB)
 - The policy bureau and overall co-ordinator
- Department of Health (DH)
 - The health advocate, health adviser & regulator
- Hospital Authority (HA)
 - Manager of the public hospital system
- Private Sector
 - Includes private hospitals & private practitioners



Health, Welfare & Food Bureau

- The Secretary for Health, Welfare & Food is the Head of the HWFB. He is a Principal Officer appointed by the Chief Executive under the Accountability System
- The Health Division of HWFB is led by a Deputy Secretary and comprises some 20 officers



Health, Welfare and Food Bureau

Hong Kong Special Administrative Region



Health, Welfare & Food Bureau (cont)

- Responsible for policy formulation relating to medical and health services
- Co-ordinating the work of its executive arms, namely DH and HA
- Proposing medical and health related legislative amendments to the Legislative Council
- Acquiring and deploying resources to support the implementation of policies and delivery of services



Health, Welfare and Food Bureau

Hong Kong Special Administrative Region

Department of Health

- DH is the Government's health adviser and agency to execute health care policies and statutory functions.
- The Director of Health is the Head of DH. She reports to the SHWF
- Budget for 2003/4: \$3.2 billion (US\$300 million)
- Number of staff: 7,200



Health, Welfare and Food Bureau

Hong Kong Special Administrative Region

Department of Health (cont)

Major work areas include:-

- preventive health programmes
- family health & social hygiene services
- public health education & promotion
- development of Traditional Chinese Medicine
- public health regulation and licensing
- port health measures
- general out-patient services
- diseases surveillance & control of communicable diseases



Health, Welfare and Food Bureau

Hong Kong Special Administrative Region



Department of Health (cont)

Statutory powers given by:-

- Quarantine & Prevention of Disease Ordinance
- Hospitals, Nursing Homes & Maternity Homes Registration Ordinance
- Medical Clinics Ordinance,
- Pharmacy & Poisons Ordinance,
- Undesirable Medical Advertisements Ordinance,
- Human Organ Transplant Ordinance,
- Radiation Ordinance, etc.



Health, Welfare and Food Bureau

Hong Kong Special Administrative Region

Hospital Authority

- A statutory body established in 1990 under the Hospital Authority Ordinance to manage all public hospitals in Hong Kong
- At present, HA is managing 43 hospitals and institutions, and has some 53,000 staff
- Number of hospital beds: 29,288
- Budget for 2003/04: \$29.6 billion (US\$3.8 billion)
- About 97.5% of HA's operating expenditure is funded by the Government



Health, Welfare and Food Bureau

Hong Kong Special Administrative Region



Hospital Authority (cont)

Under the Hospital Authority Ordinance, HA is responsible for—

- advising the Government of the needs of the public for public hospital services and of the resources required to meet these needs;
- managing and developing the public hospital system;
- establishing public hospitals; and
- promoting, assisting and taking part in education and training of persons involved in hospital services.



Health, Welfare and Food Bureau

Hong Kong Special Administrative Region

Hospital Authority (cont)

- As an independent body, HA is governed by an HA Board. All members, including the Chairman, of the HA Board are appointed by the Chief Executive
- The Deputy Secretary for Health, Welfare & Food, and the Director of Health are members of the HA Board.



Health, Welfare and Food Bureau

Hong Kong Special Administrative Region

Hospital Authority (cont)

The Government's relationship with HA :-

- The Government is responsible for the overall policy on the provision of public hospital services and for funding HA services
- HA is autonomous in the management and control of public hospitals
- Through the SHWF, HA is accountable to the Government for the effective and efficient delivery of public hospital services



Health, Welfare and Food Bureau

Hong Kong Special Administrative Region

Social Welfare



Health, Welfare and Food Bureau

Hong Kong Special Administrative Region



Policy Objectives

To enable all members of the community to fulfill an optimal social role by -

- creating an environment for them to develop their full potential;
- building social relationships and family life;
- assisting individuals to resolve their personal and social problems; and
- protecting and facilitating self-reliance amongst the disabled, the disadvantaged and the vulnerable.



Health, Welfare and Food Bureau

Hong Kong Special Administrative Region

Food and Environmental Hygiene



Health, Welfare and Food Bureau

Hong Kong Special Administrative Region



Policy Objectives

- ★ Ensure food safety
- ★ Provide quality environmental hygiene services
- ★ Facilitate the development of agriculture and fisheries
- ★ Animal and plant regulation



Health, Welfare and Food Bureau

Hong Kong Special Administrative Region

Women's Interests



Health, Welfare and Food Bureau

Hong Kong Special Administrative Region



Policy Objectives

To enable women in Hong Kong to fully realize their due status, rights and opportunities



Health, Welfare and Food Bureau

Hong Kong Special Administrative Region

Thank You



Health, Welfare and Food Bureau

Hong Kong Special Administrative Region