

立法會交通事務委員會  
鐵路事宜小組委員會

Legislative Council Panel on Transport  
Subcommittee on Matters Relating to Railways

立法會CB(3)986/2024(01)號文件  
LC Paper No. CB(3)986/2024(01)

# 鐵路項目的最新進展

## Progress Update on Railway Projects

2024年12月6日

6 December 2024



運輸及物流局

Transport and Logistics Bureau

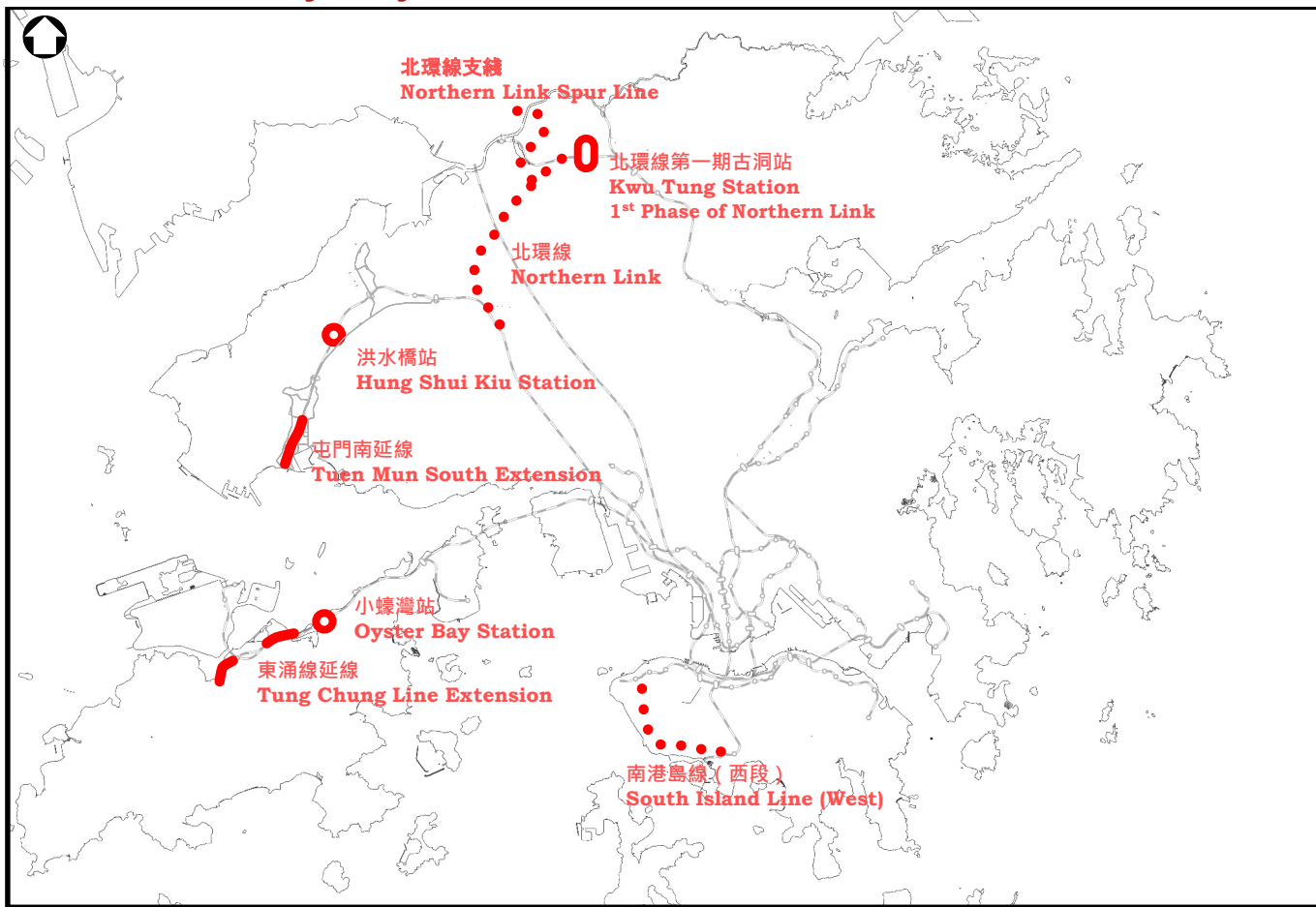


路政署

Highways Department

# 鐵路項目的最新進展

## Progress Updates on Railway Projects



# 南港島線 (西段)

## South Island Line (West)

- 採用智慧綠色集體運輸系統，替代原有重型鐵路方案。

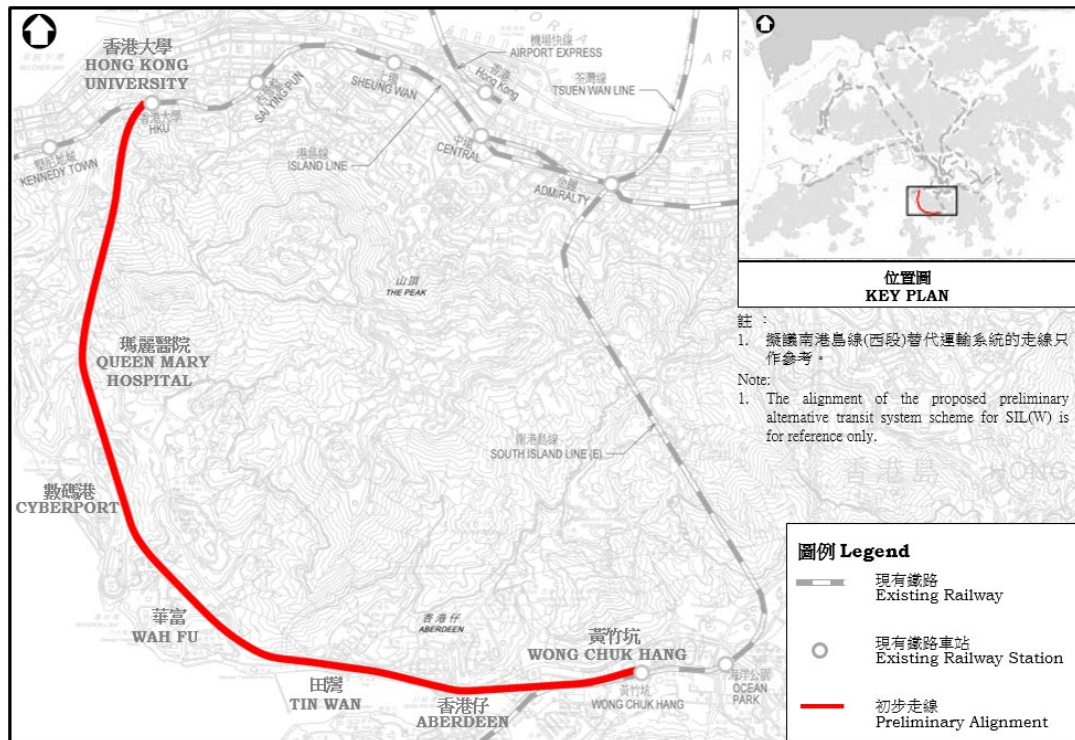
Adopting Smart and Green Mass Transit System, instead of the original heavy rail scheme.

- 主要在專屬高架橋上行走，與路面交通完全分隔，不受路面交通影響。

Mainly running on dedicated elevated viaducts, which will be completely separated from and not affected by road traffic.

- 與南港島線 (東段) 和港島線形成一個環狀網絡。

Form a transit loop with the South Island Line (East) and Island Line.



# 南港島線 (西段)

## South Island Line (West)

- 進一步優化走線以及提高成本效益，以期2025年內開展詳細規劃及設計，目標爭取於2027年開展前期建造工程。

Continue to refine the alignment and enhance cost-effectiveness with a view to commencing detailed planning and design in 2025, and striving for commencing advance construction works in 2027.

- 以配合華富邨重建計劃下新增人口遷入的時間表。

Tally with the timetable of new population intake of Wah Fu Estate Redevelopment.



# 鐵路項目最新進展

## Progress Update on Railway Projects

立法會交通事務委員會

鐵路事宜小組委員會

Legislative Council Panel on Transport

Subcommittee on Matters Relating to Railways

2024年12月6日

6 December 2024

# 新鐵路項目陸續開展建造工程

## New Railway Projects Embarking on Construction Phase

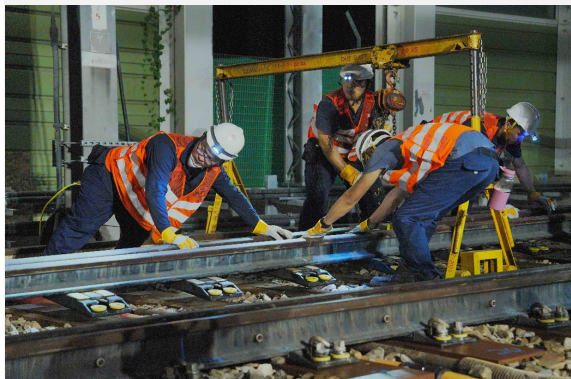


各車站名稱僅為工作名稱。The station names are working titles only.



# 2024 大型土木工程

Major Civil Works in 2024



東涌綫延綫 - 路軌改道及隧道建造工程  
Tung Chung Line Extension – track diversion and tunnel construction



屯門南延綫 - 高架橋相關工程  
Tuen Mun South Extension – viaduct related works



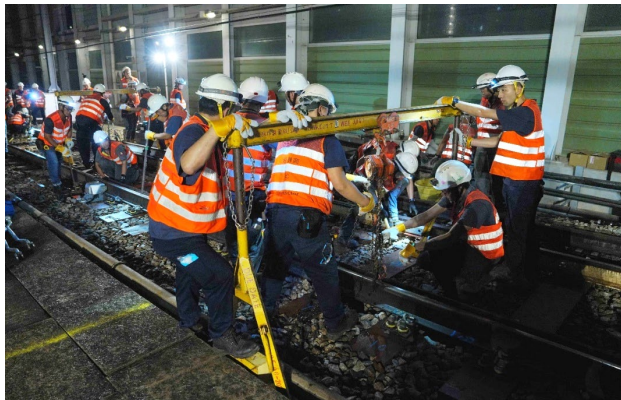
屯馬綫洪水橋站 - 移除高架橋護牆  
Hung Shui Kiu Station – parapet removal



東鐵綫古洞站 - 大型挖掘工程  
Kwu Tung Station on East Rail Line – bulk excavation

# 營運中鐵路上進行工程

## Construction on Operating Railways



- 建造新車站及鐵路延伸段時，維持鐵路安全運作。  
Maintain safe railway operation while constructing new stations and railway extensions
- 善用「黃金兩小時」施工時間，盡量減少影響列車服務。  
Maximise the use of “Golden 2 Hours” for construction to minimize impact on train services
- 精密規劃，謹慎施工，保障鐵路安全。  
Thorough planning and careful execution to protect railway safety



# 東涌綫延綫

Tung Chung Line Extension



東涌東填海區  
Tung Chung East reclamation area

東涌東站  
Tung Chung East Station

東涌站  
Tung Chung Station

東涌灣  
Tung Chung Bay

逸東邨  
Yat Tung Estate

東涌西站  
Tung Chung West Station

# 東涌綫延綫 - 西段工程

Tung Chung Line Extension – West section works

東涌西

東涌

東涌東



- 車站地下連續牆工程正在進行，即將展開車站主體挖掘工程。  
Station diaphragm wall works is in progress, bulk excavation for the station will soon commence
- 隧道工程按計劃推展，隧道鑽挖機已於10月抵港。  
Tunnel works progressing as planned; tunnel boring machine arrived in Oct

# 東涌綫延綫 - 東段工程

Tung Chung Line Extension – East section works



- 現正進行大型路軌改道工程，已於10月完成首個道岔安裝，餘下三個道岔安裝工序將會分階段在未來3年完成。  
Major track diversion works in progress. First turnout installed in Oct, the remaining three to be completed in phases in the next 3 years
- 大致完成車站地基及隔音屏障改建工程，正展開車站結構工程。  
Station foundation & noise barrier modification works substantially complete, station structural works in progress

# 小蠔灣站

Oyster Bay Station

博覽館站  
Asia World-Expo Station

機場站  
Airport Station

東涌東站  
Tung Chung East Station

東涌站  
Tung Chung Station

東涌西站  
Tung Chung West Station

小蠔灣站  
Oyster Bay Station

欣澳站  
Sunny Bay Station



- 未來小蠔灣站座落於現有東涌站及欣澳站之間  
The future Oyster Bay Station is located between Tung Chung & Sunny Bay stations



- 已完成遷移管線等前期工作，即將展開車站地基工程  
Advance works completed including diversion of cables, station foundation works will commence

# 屯門南延綫

Tuen Mun South Extension

屯門碼頭  
Tuen Mun Ferry Pier

屯門南站  
Tuen Mun South Station

第16區站  
A16 Station

屯門站  
Tuen Mun Station

# 屯門南延綫 – 第16區段工程

Tuen Mun South Extension – A16 Section Works

屯門南

第16區

屯門



第16區站及位於湖山遊樂場的鐵路高架橋地基建造成工程已開展。

Foundation works for A16 Station and the construction of the viaduct foundation at Wu Shan Recreation Playground works site have commenced.

# 屯門南延綫 – 屯門南段工程

Tuen Mun South Extension – Tuen Mun South Section Works

屯門南

第16區

屯門



➤ 湖景路現正實施臨時交通管理措施，並進行地下設施改道。

Temporary traffic management scheme is implemented on Wu King Road, and diversion of underground utilities is underway



➤ 兆禧橋及湖月橋橋身完成拆卸，以騰出空間建造屯門南站。

Demolition of the decks of Siu Hei Bridge and Wu Yuet Bridge completed to make space for the construction of the Tuen Mun South Station



# 北環綫項目- 東鐵綫古洞站

Northern Link – Kwu Tung Station on the East Rail Line



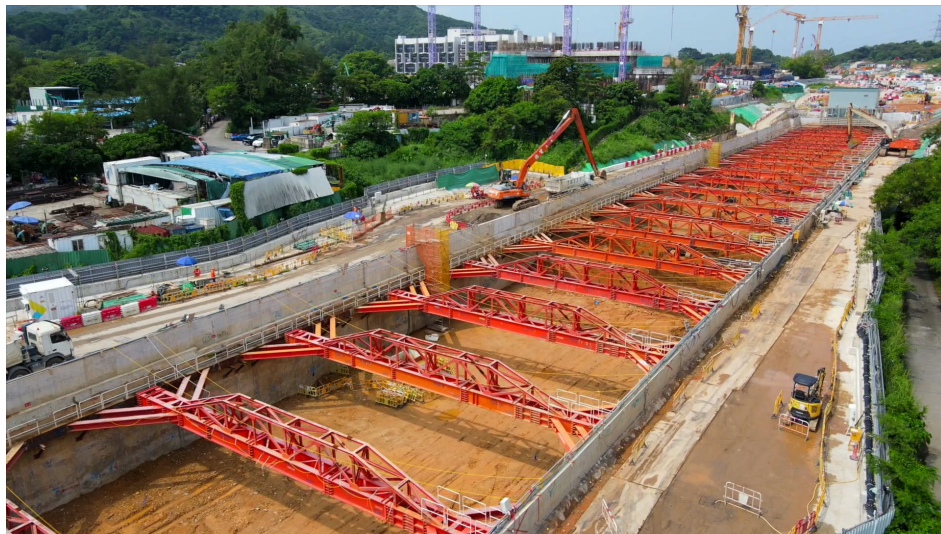
# 北環綫項目- 東鐵綫古洞站

Northern Link – Kwu Tung Station on the East Rail Line

落馬洲

古洞

上水



- 全港首個在營運中的鐵路隧道正上方興建的車站，需移除隧道上方泥土再進行建造工程。  
HK's 1<sup>st</sup> station to be built atop an operating railway tunnel. Soil has to be removed before commencing construction.
- 續層移除10米深泥土確保隧道結構穩定，約500米長隧道裝置200監測點實際時監控。  
Soil of 10m deep was removed layer by layer to ensure structural stability of the tunnel, with 200 monitoring points installed along the approximately 500m long section of tunnel for real-time monitoring.
- 大型挖掘工程於今年九月順利完成，工程期間一直維持東鐵綫日常運作。  
The bulk excavation was successfully completed in September this year without interrupting the daily operation of the East Rail Line

# 北環綫項目- 東鐵綫古洞站

Northern Link – Kwu Tung Station on the East Rail Line

落馬洲

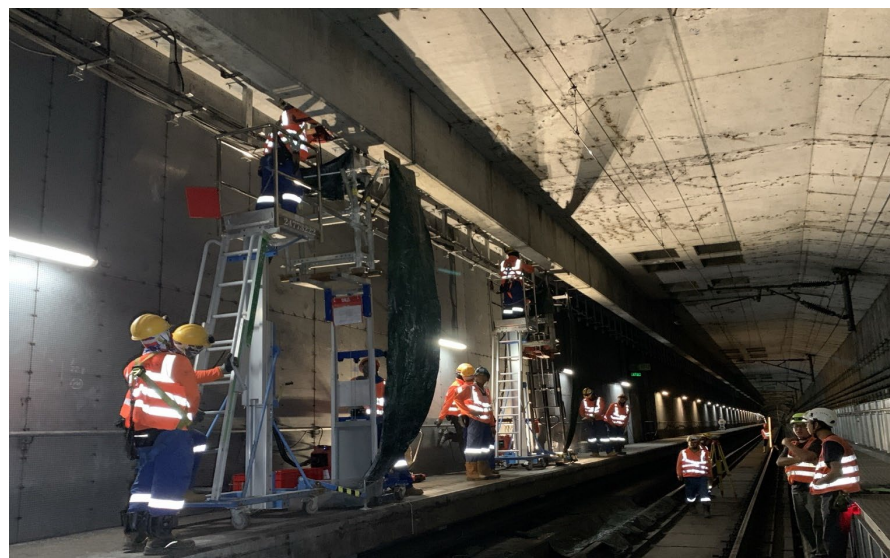
古洞

上水



- 日間建造車站主體，地面出入口及其他鐵路附屬設施。

Building of station structures, entrances and ancillary facilities during daytime.



- 夜間改動月台等工程及進行安裝月台幕門。  
Platform modifications and installations of platform screen doors during nighttime.

# 北環綫主綫

Northern Link Mainline

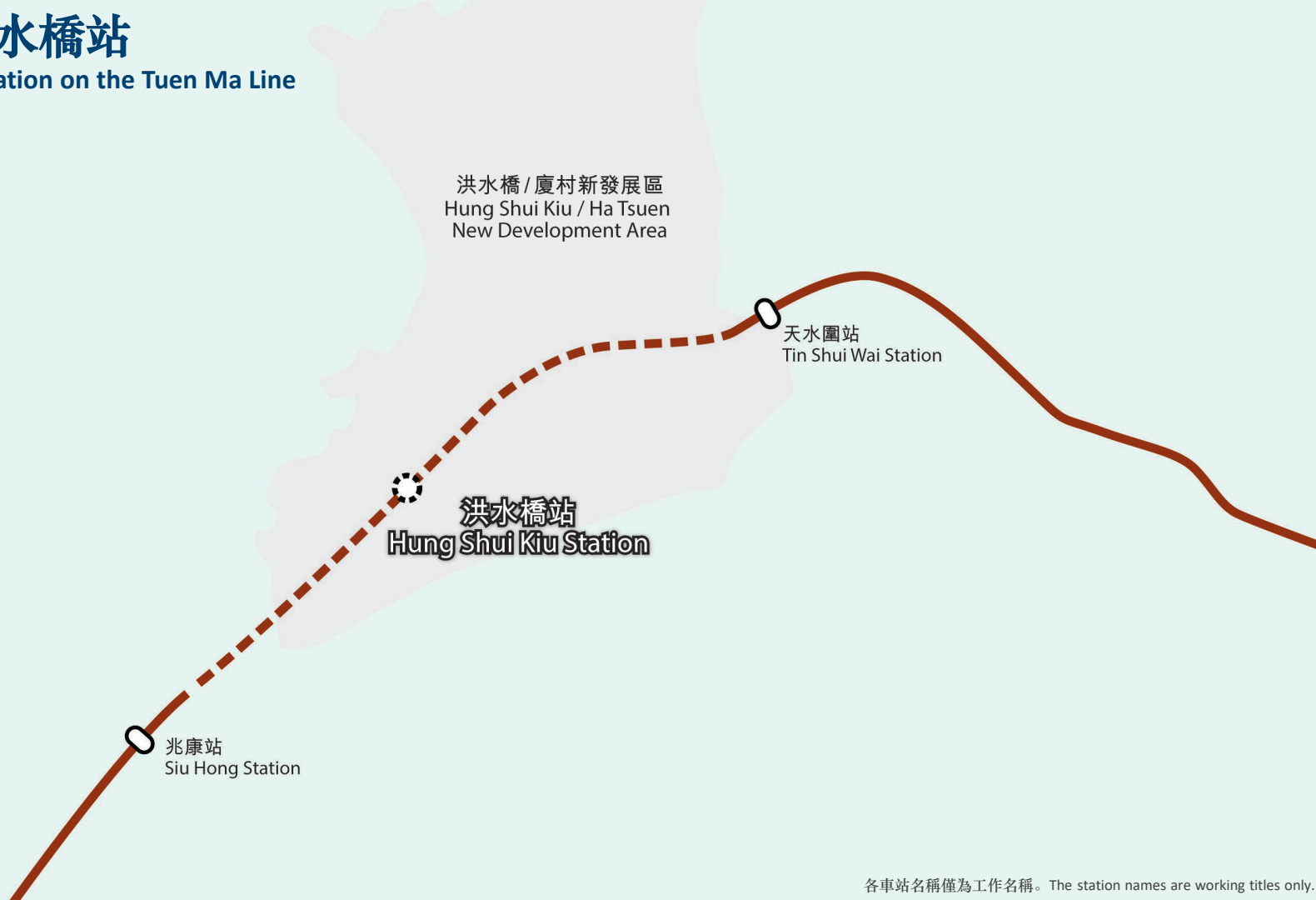


- 鐵路方案已根據《鐵路條例》（第519章）刊憲。  
The Railway Scheme has been gazetted in accordance with the Railways Ordinance (Chapter 519).
- 建造工程預計於2025年開展，目標於2024年竣工。  
Construction is expected to commence in 2025 and targeted to complete in 2034.



# 屯馬綫洪水橋站

Hung Shui Kiu Station on the Tuen Ma Line



洪水橋 / 廈村新發展區  
Hung Shui Kiu / Ha Tsuen  
New Development Area

天水圍站  
Tin Shui Wai Station

洪水橋站  
Hung Shui Kiu Station

兆康站  
Siu Hong Station

# 屯馬綫洪水橋站

Hung Shui Kiu Station on the Tuen Ma Line

兆康

洪水橋

天水圍



- 全港第1個於鐵路高架橋上興建的車站，項目已展開一系列工程。

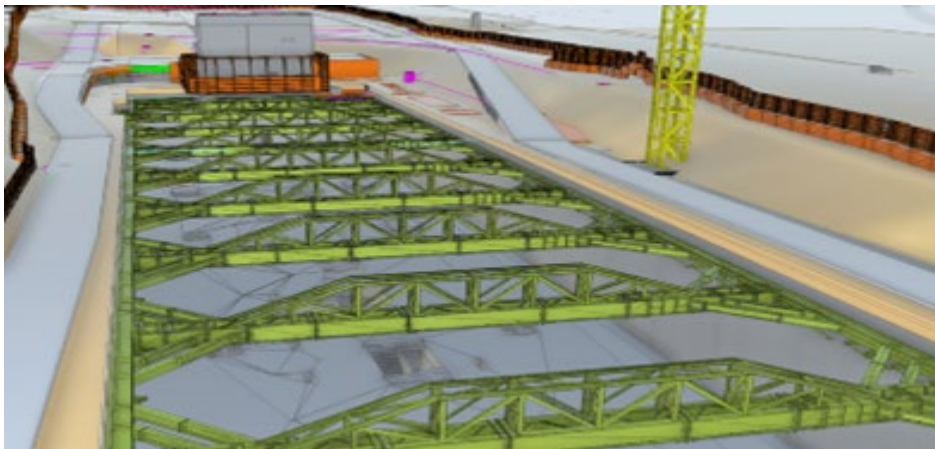
HK's 1<sup>st</sup> Station to be built on an Operating Railway Viaduct. A series of works is in full swing on the Tuen Ma Line.

- 高架橋下行方向已完成移除護牆，即將展開上行方向的護牆移除工程，以備日後組裝洪水橋站的月台及其他預製結構組件。

Removal of the down-track parapet of the viaduct is completed, while removal of parapet on the up-track will commence soon, paving the way for assembly of the station platforms and other pre-fabricated structures.

# 應用新科技及技術加強項目管理

## Innovation and Technology to Enhance Project Management



- 應用雲端綜合數碼共用平台 (CDE) 及建築資訊模型 (BIM) 等技術，實時更新及共享最新資訊  
Application of Common Data Digital Engineering (CDE) Platform and Building Information Modelling (BIM) technology, allowing instant updates and sharing of latest project information

- 設數碼資訊中心，更有效監察及管理工程  
Set up Digital Delivery Centre (DDC) to manage and monitor project performance



- 裝配式建築設計 (DfMA) 和機電裝備合成法 (MiMEP) 提升建造效率  
Design for Manufacture & Assembly (DfMA) & Multi-trade Integrated Mechanical, Electrical & Plumbing (MiMEP) to enhance efficiency



# 透過不同渠道介紹項目進度及資訊

Update Project Progress and Information via multiple channels



## 傳媒簡介及工地參觀 Media Briefings and Site Visits

## 社交平台 Social Media Platforms



## 網頁及通訊 Websites and Newsletters





# 積極連繫社區 增進與各持分者溝通

Close Communications and Engagement with Multi-Level Stakeholders



>185

視察/會議  
site visits/meetings



>120

講座/工作坊/地區活動  
talks/workshops/community events



>400

地區團體/學校  
schools/communities/parties



>68000

持分者  
stakeholders

# 全力推展新鐵路項目 支持香港發展策略

Taking Forward New Railway Projects to support Hong Kong's Development Strategy



謝謝  
THANK YOU